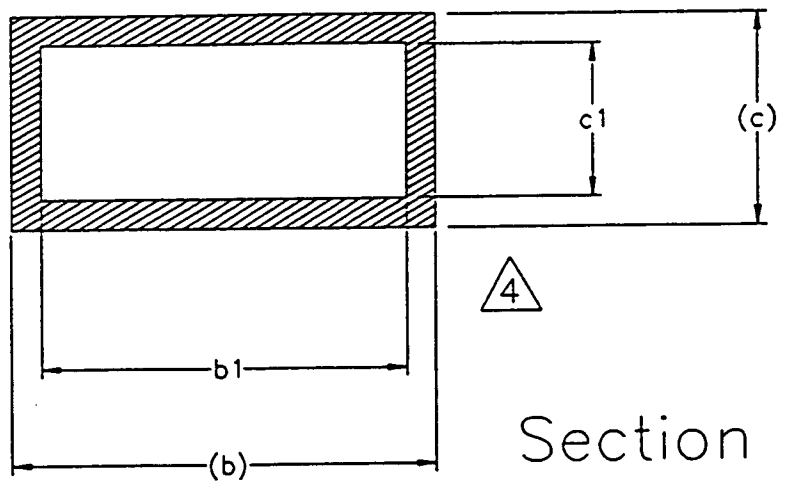
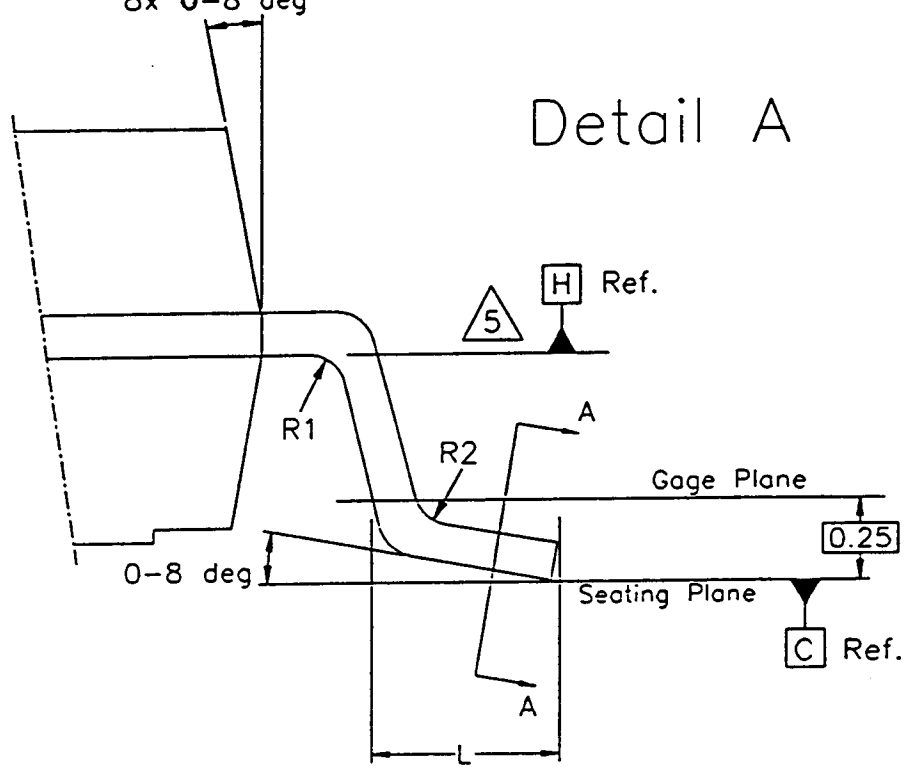


<p>JEDEC SOLID STATE PRODUCT OUTLINES</p>	<p>This REGISTERED OUTLINE has been prepared by the JEDEC JC-11 Committee, and reflects a product with anticipated usage in the Electronics Industry. Changes are likely to occur.</p>				
<p>TITLE: SMALL OUTLINE SURFACE MOUNT</p>	<p>R-PDSO-G4</p>	<p>ISSUE A</p>	<p>DATE: AUG 96</p>	<p>ITEM TO-269</p>	<p>SHEET 1 OF 3</p>

Draft Angle
8x 0-8 deg

Detail A



Section A-A

<p>JEDEC SOLID STATE PRODUCT OUTLINES</p>	<p>TITLE: R-PDSO-G4 SMALL OUTLINE SURFACE MOUNT</p>	<p>ISSUE A</p>	<p>DATE: AUG 96</p>	<p>ITEM TO-269</p>	<p>SHEET 2 OF 3</p>
--	--	---------------------------	------------------------------------	-------------------------------	--

NOTES:

- 1- Dimensioning and Tolerancing per ASME Y14.5M-1994
- 2- All Dimensions in MILLIMETERS
- 3- Dimensions D and E1 do not include mold flash
Mold flash shall not exceed 0.13 mm per side.
- 4- Dimensions b1 and c1 apply to base metal only.
Dimensions b and c apply to plated leads.
Dimensions b, c, b1, c1 to be measured on flat section of the lead,
between 0.13 and 0.25 mm from lead tip.
- 5- Dimensions D and E1 to be determined at Datum Plane H
- 6- N is the number of Terminals
- 7- Pedestal (E2 and A3) is an optional feature.
- 8- Index Area for Terminal #1 - Chamfer is optional.

VARIATIONS

Symbol	AA							
	Min	Nom	Max	Note	Min	Nom	Max	Note
A	2.40	2.65	2.90					
A1	0.05	0.15	0.20					
A2	2.30	2.50	2.70					
A3	0.10	0.15	0.20	7				
b	0.43	--	0.74	4				
b1	0.43	0.56	0.64	4				
c	0.15	--	0.41	4				
c1	0.15	0.23	0.31	4				
D	4.55	4.85	4.95	3, 5				
E	6.40	6.65	6.90					
E1	3.65	3.95	4.10	3, 5				
E2	2.80	2.85	2.90	7				
e		2.54 BASIC						
k	0.38	0.51	0.76	8				
L	0.48	0.72	0.96					
N		4		6				
R1	0.15	--	--					
R2	0.15	--	--					
α		45 Degrees Ref.		8				
Note	1, 2							
Ref.	10-358							
Issue	A							

JEDEC SOLID STATE PRODUCT OUTLINES	TITLE: R-PDSO-G4 SMALL OUTLINE SURFACE MOUNT	ISSUE A	DATE: AUG 96	ITEM TO-269	SHEET 3 OF 3
---	---	------------	---------------------------	----------------	-----------------------